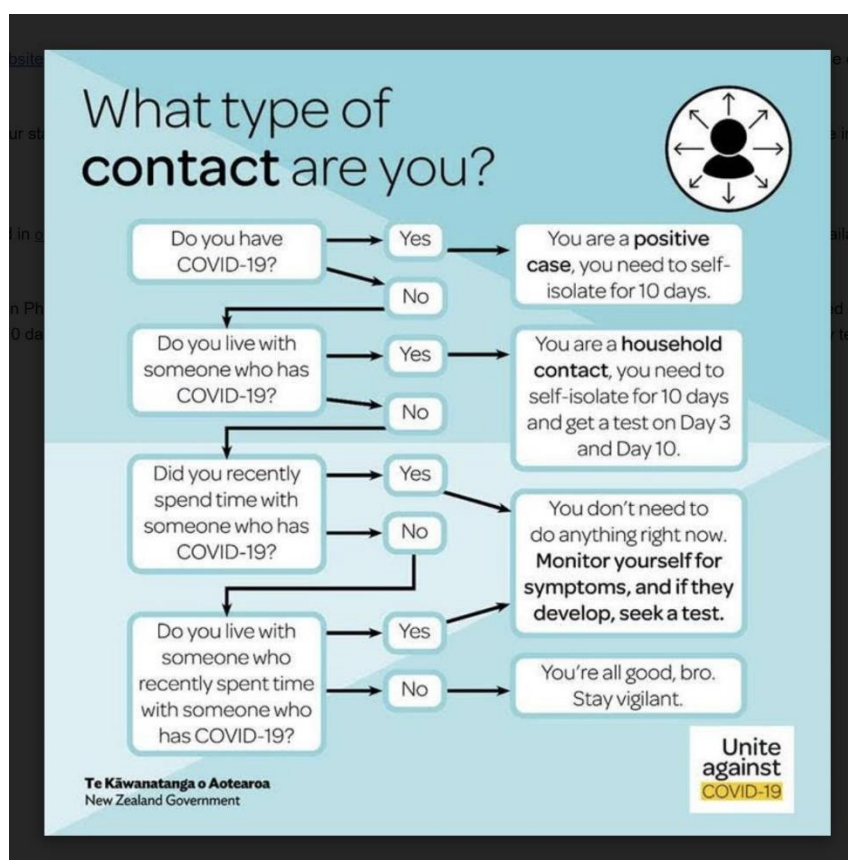


1 March 2022

Dear Parents and Caregivers,

I have to say that Phase 3 of red is turning out to be a very different experience than Phase 2. Phase 2 had a little bit of a tense feel as we received calls for positive results and then had to contact trace and notify those who were close contacts. It really was an exhausting week, especially for those who were impacted by Covid results, and also for Kim van Vuuren, our Assistant Principal who led the team to deal with these cases. Kim also holds the phone for our Covid Hotline and was receiving calls from concerned parents at all hours of the day and night and weekends.

Now that we have moved to Phase 3, we are spending less time on contact tracing, which frees up time to spend time on actually managing the impact of our school, for example, staff who are isolating awaiting tests or because they have a case at home. We no longer contact trace, only household members are classified as a close contact. I have added a flow diagram so that you will know where you are in this process.



We are not informing our community of new cases as we anticipate this will continue on for some time. We normally are informed of a case every day; however, we are not seeing an increase in case numbers each day. We have both students and staff who have been affected by Covid, either by testing positive or in isolation. What I can tell you is that (touch wood), we have yet to have a case that has been transmitted at school. All our cases have come from events outside of school, be it parties or from family members. In South Australia, only 4% of cases originated from transmission at school. Attendance at school is good, but there are some classes that are impacted more than others, mainly in the senior school. We are not at the place where I feel the need to shift to online learning, this really is more dependent on staff numbers than student numbers.

Be safe, be kind

Bruce